



# LEHIGH

UNIVERSITY



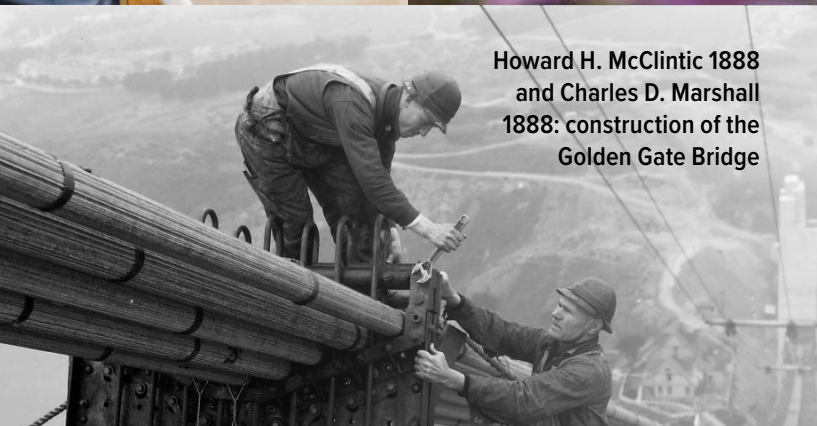




Dr. Frank L. Douglas '66:  
led the teams responsible  
for drugs including  
Allegra, Lantus,  
Taxotere and Actonel



For more than 150 years, Lehigh's  
focus on the hard work of today  
has produced solutions to the  
challenges of tomorrow.



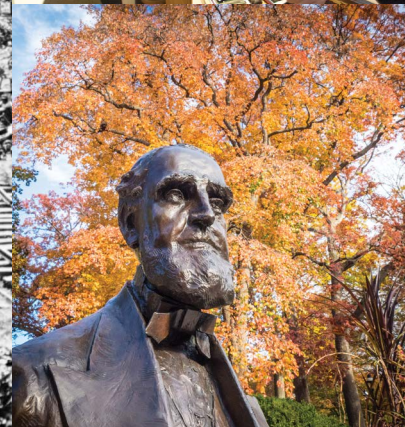
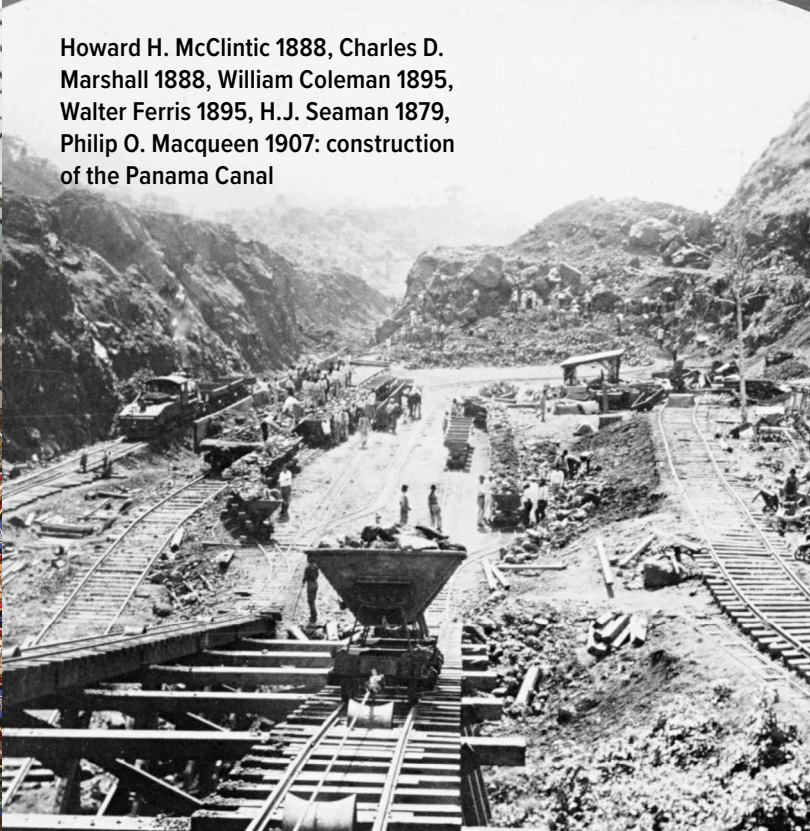
Howard H. McClintic 1888  
and Charles D. Marshall  
1888: construction of the  
Golden Gate Bridge







Howard H. McClintic 1888, Charles D. Marshall 1888, William Coleman 1895, Walter Ferris 1895, H.J. Seaman 1879, Philip O. Macqueen 1907: construction of the Panama Canal



Stacey Cunningham '96:  
first woman president of  
the NYSE



We have developed some of the most innovative minds of our time, whose focused determination has left a lasting mark on the world.



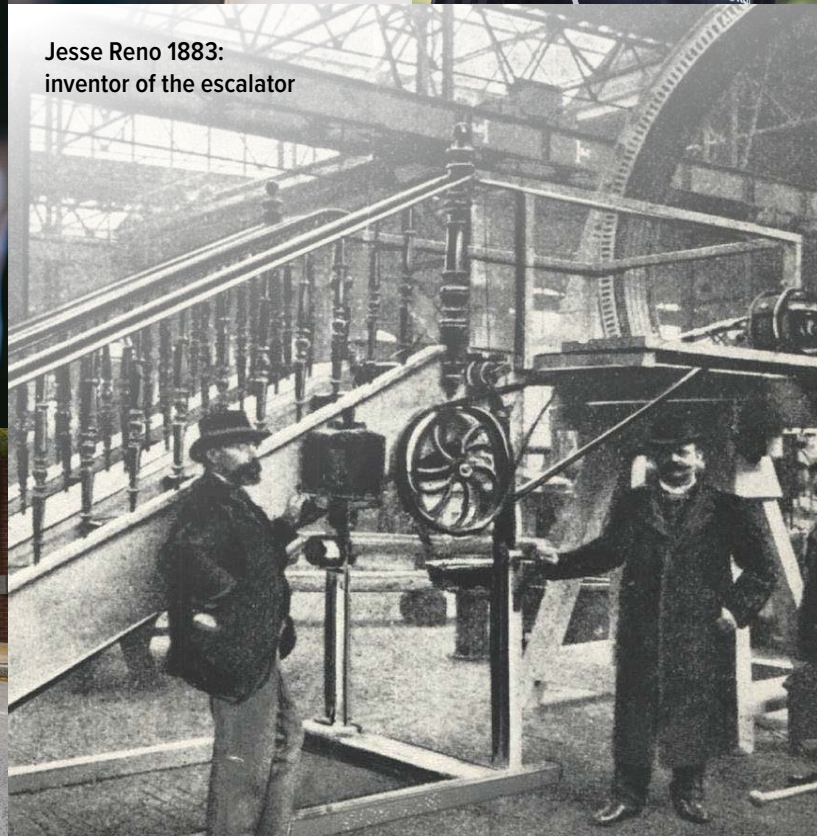




Ricky Kirshner '82:  
producer of the Super  
Bowl halftime show



C.J. McCollum '13: NBA  
Most Improved Player;  
founder, CJ McCollum  
Dream Center



Jesse Reno 1883:  
inventor of the escalator







At Lehigh, we believe that with every challenge comes opportunity, and the chance to show the world our tenacious drive and collaborative spirit. Together, we can tackle some of the biggest issues facing our planet, bettering ourselves—and the world—along the way.

We are built  
for tomorrow's  
challenges.  
Are you?



A background image of students in a classroom or lab setting, with a red overlay. Several students are visible, some using laptops and tablets. The text is overlaid on this image.

# Creative Problem Solving

We are built to combine imagination and practicality to find solutions to tomorrow's challenges.

**100+**

programs and majors

**5,451**

undergraduate students  
(1,812 graduate students)

**9:1**

student-to-faculty ratio

**1,469**

undergraduates took part  
in research in 2019-20



# A Well-Rounded Education

When you apply to Lehigh, you'll apply to one of our four undergraduate colleges or directly into an intercollegiate interdisciplinary program. Students have the opportunity to take courses across colleges, pursue additional majors/minors outside of their primary college and study problems pragmatically from multiple angles. No matter your path, you'll have the opportunity to explore ideas that excite and challenge you.



**College of Arts and Sciences**  
[cas.lehigh.edu](http://cas.lehigh.edu)

Find educational opportunities both broad and deep that will help you grow into a critical and creative thinker.

- 2,068 undergraduate students



**College of Business**  
[business.lehigh.edu](http://business.lehigh.edu)

Think unconventionally and with integrity as you prepare to become a leader both inside and outside of the boardroom.

- 1,304 undergraduate students



**College of Health**  
[health.lehigh.edu](http://health.lehigh.edu)

Join the next generation of leaders who will shape the future of population health and make an impact on society.

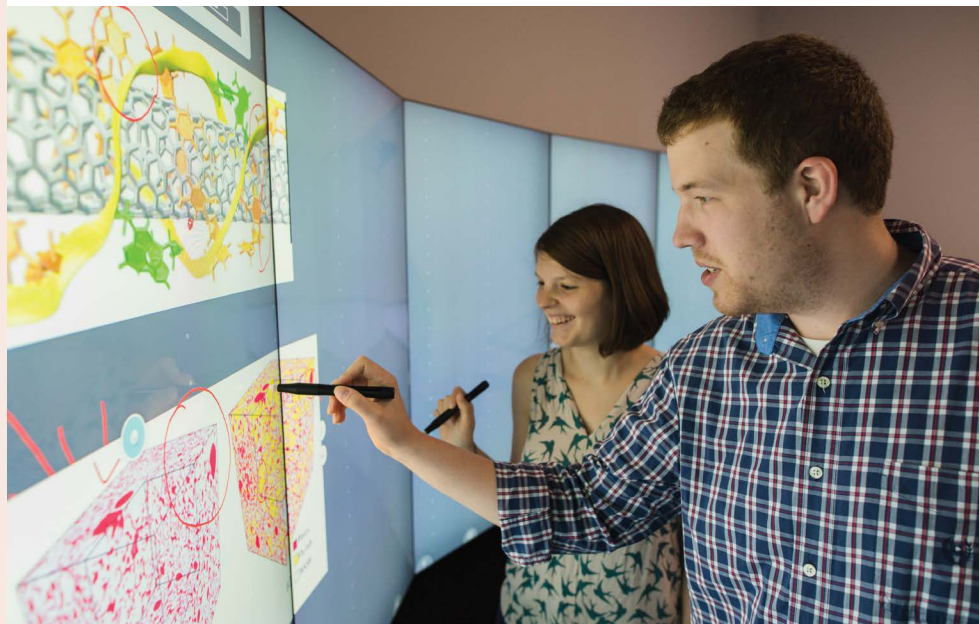
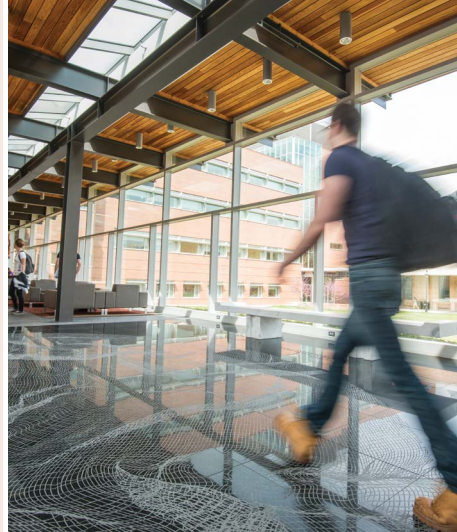
- 94 undergraduate students



**P.C. Rossin College of Engineering and Applied Science**  
[engineering.lehigh.edu](http://engineering.lehigh.edu)

Become a problem solver who thinks holistically about societal challenges and conducts research in an integrated and collaborative environment.

- 1,350 undergraduate students



## Our Newest College

Just as Lehigh was founded on a forward-thinking interdisciplinary concept—the combination of engineering and liberal arts to take a humanistic approach to problem-solving—we have launched the College of Health to shape the future of health and healthcare through an innovative approach to teaching and research. The college's interdisciplinary focus will allow it to easily draw on the expertise of faculty in Lehigh's four colleges and collaborate on learning and research experiences.

As the first college in the nation to offer an undergraduate degree in population health with a focus on health innovation and technology, the College of Health will prepare students to investigate the determinants of health using data science, and to identify novel and effective avenues for disease prevention, health promotion, diagnosis and intervention. Graduates will be in a unique position to meet the ever-increasing employment needs of the healthcare sector in the fields of epidemiology, medicine, data science, biostatistics, global health, health economics, health policy, community health, health promotion, and health technology and innovation.



College of Health professors Dr. Eduardo Gomez, Dr. Halcyon Skinner and Dr. Thomas McAndrew have recently been featured in the media for their expertise on COVID-19.



# Opportunities for Innovation and Exploration

Lehigh invites students from all majors to pursue new academic, creative and entrepreneurial pathways that lead to transformative questions and innovations. Students are encouraged to take intellectual risks, learn from failures, and collaborate with members of the campus community and beyond to address real-world problems. A wide variety of programs are offered year-round for students in all colleges and range from in-depth research projects to evening workshops.

## LehighHacks

At the LehighHacks 24-hour hackathon, students work in teams to use technology to create unique solutions to problems in financial technology, smart environments and social apps.

## The Hatchery

An immersive, full-time learning experience where students gain foundational entrepreneurship skills and bring their own startup ideas to life.

## Global Entrepreneurship Internships

GEIs are an exciting opportunity for students to learn about global entrepreneurship through an eight-week group internship experience with startups in another country.

## LearnX, MakeX, SprintX

A series of hands-on workshops where you can have fun while creating, learning and rapidly tackling complex questions.



## STUDENTS

### Sustainable Solutions

Lehigh's Global Student Impact Fellows conducted fieldwork in Sierra Leone on projects designed to fight hunger and disease, and increase global awareness of health crises, all with a shared goal: sustainable impact. To see a short documentary about the journey, visit [go.lehigh.edu/sierraleone](http://go.lehigh.edu/sierraleone).

Highlights include students that:

- trained local health workers for the launch of Ukweli, an inexpensive test strip for urinary tract infections and preeclampsia.
- produced a documentary on maternal health in Sierra Leone, which has the highest maternal mortality rate in the world.



## COMMUNITY

### A Win-Win-Win Solution

Each year, American college students leave their universities for the summer and leave behind items they cannot or do not want to take with them. For more than 20 years, Lehigh's annual Move Out Collection Drive has addressed this issue by inviting students to donate unwanted goods, which are then sold at the Great South Side Sale. The popular sale raises approximately \$20,000 per year to benefit children and youth programs in South Bethlehem.



## ALUMNI

### The Basketball Businesswoman

Cathy Engelbert '86 helped Lehigh clinch its first East Coast Conference women's basketball title and went on to become the first woman to head a U.S. professional services firm at Deloitte. Today she leads the WNBA as its first commissioner and is making headlines as she tackles the issue of equal pay across professional basketball, which she has called "the perfect business problem."





**FAVORITE THING  
ABOUT LEHIGH**

The campus and classes are just about the right size for me. I am able to make friends and connect with professors easily. This promotes a family atmosphere.



**STUDENT PROFILE**

# Problem-Solving for Startups

**Michael Tahiru '22**

**COLLEGE:**

College of Business

**MAJORS:**

Finance and Africana Studies

**MINORS:**

Business Analytics  
and Religion Studies

**HOMETOWN:**

Accra, Ghana

**ACTIVITIES:**

Member of the Lehigh Men's Soccer team, founder and president of the Lehigh Africa Business Club, Cru athletes, African Students Association, Students Athletes Of Color

“

I started a venture capital company, Remat Investments, in Ghana with a license to do business across the African continent. The company's focus is to provide funding for startups across the continent in impact industries like technology, agriculture, healthcare and real estate. I want to work for an investment banking firm in America for about two years after graduation before taking a full time role with the venture business.

”



A photograph of three students (two women and one man) working together on a project. The man in the center is wearing a black t-shirt with 'ZEPHYRUS' and '2024' on it. They are all wearing safety glasses. The image has a teal overlay.

# Collaborative Culture

We are built to succeed individually and harness the powerful potential of working together to serve a greater purpose.

**20+**

interdisciplinary programs spanning multiple colleges

**2,300+**

programs and courses offered

**568**

undergraduate students in intercollegiate interdisciplinary programs

**25**

Division I teams, 40 intramural and club teams





# Interdisciplinary Programs

The world's problems are not divided neatly into disciplines, and we believe those who will someday solve those problems—and those currently tackling them—shouldn't be limited to just one or two areas of study. Lehigh's intercollegiate interdisciplinary programs, along with interdisciplinary programs within the College of Arts and Sciences, teach students to fuse thinking from across disciplines to critically approach challenges and succeed in real-world environments.

## Computer Science and Business Program (CSB)

The CSB program provides a fundamental understanding of business, technology and how they fit together in our global economy. The program is a joint initiative between the College of Business and the Department of Computer Science and Engineering in the P.C. Rossin College of Engineering and Applied Science. CSB students enroll—and are assigned faculty advisors—in both colleges. Students completing this demanding program are awarded a unique joint degree from both colleges.

## Integrated Degree in Engineering, Arts and Sciences (IDEAS)

IDEAS students can combine the technological sophistication of an engineering background with the opportunity to tap their creativity, enrich their minds and make a difference in the world. Students choose two concentrations based on their interests—one in the P.C. Rossin College of Engineering and Applied Science and one in the College of Arts and Sciences. Graduates of the IDEAS program will earn a single degree—a B.S. in Integrated Engineering, Arts and Sciences with two concentrations conferred by both colleges.

## Integrated Business and Engineering Honors Program (IBE)

The IBE program provides students with a background in technology and commerce, preparing them for success in the constantly changing marketplace. Students in the IBE program can major in any area of business or engineering that Lehigh offers. Each student will elect a traditional major in either the College of Business or the P.C. Rossin College of Engineering and Applied Science upon completion of his or her first year and will receive a single bachelor of science degree in integrated business and engineering.

➤  
The College of Arts and Sciences offers more than 20 interdisciplinary studies programs in areas as diverse as health, medicine, and society; Africana studies; cognitive science; sustainable development; and Asian studies.



## STUDENTS Summer Discovery

Each summer, the high bays of Lehigh's Mountaintop Campus welcome the Mountaintop Summer Experience, which supports undergraduate and graduate students working across many disciplines on dozens of projects that aim to develop transformative new innovations, new expressions and new questions. Last year's student-led projects focused on mass incarceration and the role of art and culture; visual localization and mapping of autonomous robots; and the development of a patient-customized cochlear implant simulation app, among many others. Students are able to continue work on their projects through the academic year.







## STUDENT PROFILE

# Collaborative Kindness

**Giavanna Gast '24**

### COLLEGES:

College of Arts and Sciences;  
P.C. Rossin College of Engineering  
and Applied Science

### PROGRAM:

IDEAS: Product Engineering,  
Materials Physics, Sustainable  
Development

### HOMETOWN:

Des Moines, Iowa

### ACTIVITIES:

EcoRealm—Sustainable Impact  
Fellowship, Design Labs Fellow,  
Astrophysics Research, Outing  
Club, Wind Ensemble, Astronomy  
Club, Gymnastics Club



The people I've met at Lehigh are not only some of the smartest I know, but also the kindest. Whether you're looking for help with a class, finding a research opportunity or applying for a nationally competitive scholarship, you won't have to search for long before finding someone who is well informed and willing to help.



### FAVORITE STUDY SPOT

*The Wilbur Powerhouse!*  
I absolutely love the whirring of the 3D printers, the constant inventors and tinkers who frequent the space, and the beautiful trees and fairy lights outside.



# West Coast Lehigh

Lehigh University and Silicon Valley—two entities that produce innovators and entrepreneurs—provide the perfect experiential complement. Lehigh students get the best of both worlds by combining the university's strengths in problem-solving with direct exposure to West Coast alumni, industry leaders and trends through guest lectures and group immersion programs.

Lehigh's collaboration with the NasdaqCenter as its sole academic partner provides students with the opportunity to explore new ideas in a challenging academic environment while developing critical thinking skills and resilience.

## Lehigh@NasdaqCenter Events and Remote Lecture

Lehigh@NasdaqCenter is an in-residence collaboration, located in San Francisco, to further entrepreneurial education for Lehigh students and alumni. Along with on-site events and workshops, guest lectures provided remotely from the Lehigh@Nasdaq Center give students in Bethlehem access to founders and executives of innovative companies who can provide new insights and shape students' future career aspirations.

## Western Regional Office

Lehigh's Western Regional Office (WRO) extends educational opportunities for Lehigh students and faculty by building curricular and research partnerships with dynamic enterprises in selected key cities. Lehigh staff at the WRO work closely with school counselors, alumni and prospective students in the Western Region, bringing Lehigh to them.

## LehighSiliconValley

LehighSiliconValley brings students from all disciplines to California's Silicon Valley for an immersive weeklong experience. Students meet with and learn from experts, entrepreneurs, inventors, venture capital investors, product design experts and others. This rich real-world team experience is designed to enhance students' own entrepreneurial ventures and collaboration skills.



Lehigh@NasdaqCenter offers a campus extension for Lehigh students based in the heart of San Francisco, embedded in one of the most active startup scenes in the world.



## ALUMNI The NASA Collaborator

Pam Fusek '13 is living her dream as a test engineer at NASA's Jet Propulsion Lab, and she attributes a large part of her success in a highly collaborative field to her time at Lehigh. As an aeronautical engineering minor, she was advised by professor Terry Hart '68, a former U.S. Air Force fighter pilot and NASA astronaut. Hart's Spacecraft Systems Engineering course helped Fusek realize what she wanted to do with her life.



## STUDENTS Thriving Student Journalism

In publication since 1894, Lehigh's student-run newspaper, *The Brown and White*, has a staff of 150+ students each semester and is open to students of all majors. More than half of participating students are nonjournalism majors, making for an interesting collaboration—and one big family. Successful alumni include Marty Baron '76, '76G, '14H, retired executive editor at *The Washington Post* and previously executive editor of *The Boston Globe*.



A blue-tinted photograph of three students looking at a large map spread out on a table outdoors. On the left, a student with long dreadlocks and a patterned headband looks down at the map. In the center, a student with a bun looks intently. On the right, a student wearing a baseball cap looks on. The background shows trees and foliage.

# Impact on Humanity

We are built to do thoughtful and meaningful work that helps individuals and communities both locally and globally.

**13K+**

Lehigh students, faculty and staff have directly engaged in UN programs

**65K+**

hours of community service performed by the Lehigh community each year

**95**

Lehigh faculty grants fund international research and other scholarly work each year

**93**

countries represented in the undergraduate and graduate populations





## A Partnership with the United Nations

Lehigh was just the sixth university in the world to have official recognition as a Non-Governmental Organization (NGO) by the United Nations, alongside organizations including the International Federation of the Red Cross and the Humane Society of the United States. This NGO status means our students have the opportunity to attend UN conferences and private briefings, intern with UN NGO offices worldwide, serve as youth delegates, and host ambassadors and UN delegates on campus. Each year more than 1,500 Lehigh faculty, staff and students attend UN conferences, high-level briefings and private meetings with ambassadors and other UN officials in New York City and on campus.

### Youth Representative Program

Youth Representatives meet with global decision makers, participate in international conferences, and moderate briefings broadcast worldwide. Our Youth Representatives speak on the floor of the General Assembly and work with a wide array of organizations, including Lawyers without Borders, the Peres Center for Peace in Israel, the Center for Public Health in Nigeria and the Darfur Rehabilitation Project in Sudan.

### United Nations Interns

More than 90 Lehigh University students have served as interns at the UN, and have had experiences including meeting the secretary general and engaging with senior UN diplomats. Our students have interned as speech writers, social media marketers, UNESCO researchers, NGO Relations staff members and designers of globally viewed briefings.

### United Nations on Campus

Ambassadors and delegates from across the world have visited Lehigh's campus to give speeches, hold workshops and engage directly with students, faculty and staff.



### STUDENTS Promoting Women's Safety

An interdisciplinary team of Lehigh students developed a small, cost-effective device to help women living in areas with high rates of violence against them to quickly access emergency response services. The students' invention, Soterra, uses Bluetooth mesh networking technology and GPS to allow women to discreetly contact friends, family or the police when they feel threatened.



### ALUMNI Developing Life- Changing Medications

An award-winning industry veteran with nearly three decades of experience in healthcare, pharmaceuticals and entrepreneurship, Dr. Frank L. Douglas has improved the health of millions of patients by leading the teams that were responsible for numerous drugs, including Allegra, Lantus, Taxotere and Actonel. Dr. Douglas has come back to campus as a keynote speaker for admitted student programming to discuss his experiences at Lehigh and in his career.

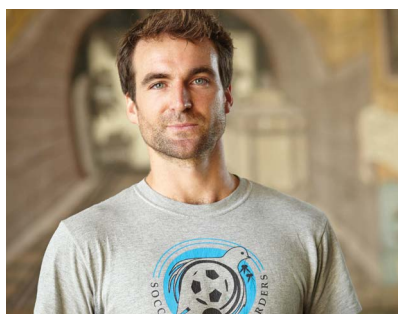


# Lehigh Launch

Lehigh Launch is a first-semester integrative learning experience for intellectually curious and independent students offered in the American West (Wyoming and New Mexico) and Ecuador (Quito, the Amazon and the Galapagos Islands). Through hands-on learning and challenging coursework in a living-learning community, students will gain new perspectives, grow as individuals and return to Lehigh with the experience and knowledge that will help them succeed.

Students earn 16 credit hours through classroom-based and experiential learning, while fulfilling distribution requirements in natural science, social science and the humanities, as well as the first-year seminar requirement. The program, led by Lehigh faculty and staff, is open to students in any major and costs the same as an on-campus semester (financial aid applies the same as for an on-campus semester as well).

Both Lehigh Launch locations focus on place-based learning. Students in the American West will spend time learning about the literature, earth and environment, and peoples of Wyoming and New Mexico, and take a backpacking expedition with the National Outdoor Leadership School (NOLS) to elevate the program's classroom-and field-based learning. Students in Ecuador will experience culture by studying in the beautiful colonial city of Quito and the Amazon rainforest and spending time on the Galapagos Islands, one of the most pristine natural laboratories in the world.



## ALUMNI A Catalyst for Positivity

Ben Gucciardi '05 '06G founded Soccer Without Borders (SWB), a nonprofit that aims to use soccer as a vehicle for positive change. SWB provides under-served youth an avenue to overcome obstacles to growth, inclusion, and personal success, and has received many global awards including the FIFA Diversity Award. Gucciardi was also honored as a White House Champion of Change for World Refugee Day 2015.



## FACULTY Advancement of Science Fellow

Dr. Vassie Ware, professor of molecular biology, was named a fellow of the American Association for the Advancement of Science (AAAS), the world's largest general scientific society and the publisher of the journal *Science*. She was recognized for her contributions to understanding ribosomes and for outstanding initiatives in undergraduate science education.



## STUDENTS Supporting Partner Communities

A group of Lehigh students from across all colleges spent their spring break volunteering at a nonprofit in Virginia. The students worked to help the organization provide low-cost, organic produce for community members in the local food desert. The Community Service Office offers similar weeklong, student-run trips each year.



STUDENT PROFILE

# Research for Good

**Abigail Bryer '23**

**COLLEGE:**

College of Health

**MAJOR:**

Population Health, concentration in  
Biostatistics and Epidemiology

**HOMETOWN:**

Melrose, Massachusetts

**ACTIVITIES:**

Club Ski Team, Conservation  
Club, Greek life, College of Health  
student ambassador and student  
advisory committee member,  
student research assistant

“

A lot of my research focus has been analyzing the data collected about COVID-19 within Native American communities ... Researching and working in ways that help people is something that I have always wanted to be a part of and this research opportunity has been a steppingstone to do so.

”



**FAVORITE THING  
ABOUT LEHIGH**

There are a lot of things I love about Lehigh, but my favorite thing is probably its size. I feel like Lehigh is a big enough university that I am always meeting new people, but I don't feel like a small fish in a big pond.





# Dynamic Community

We are built to  
dive right in, forge  
lifelong friendships,  
and explore new  
opportunities in and  
out of the classroom.

**93%**

of students participate  
in an extracurricular activity

**200+**

clubs and  
organizations

**15+**

types of cuisines  
within walking  
distance of campus

**80K+**

residents in  
Bethlehem



# Vibrant Student Life

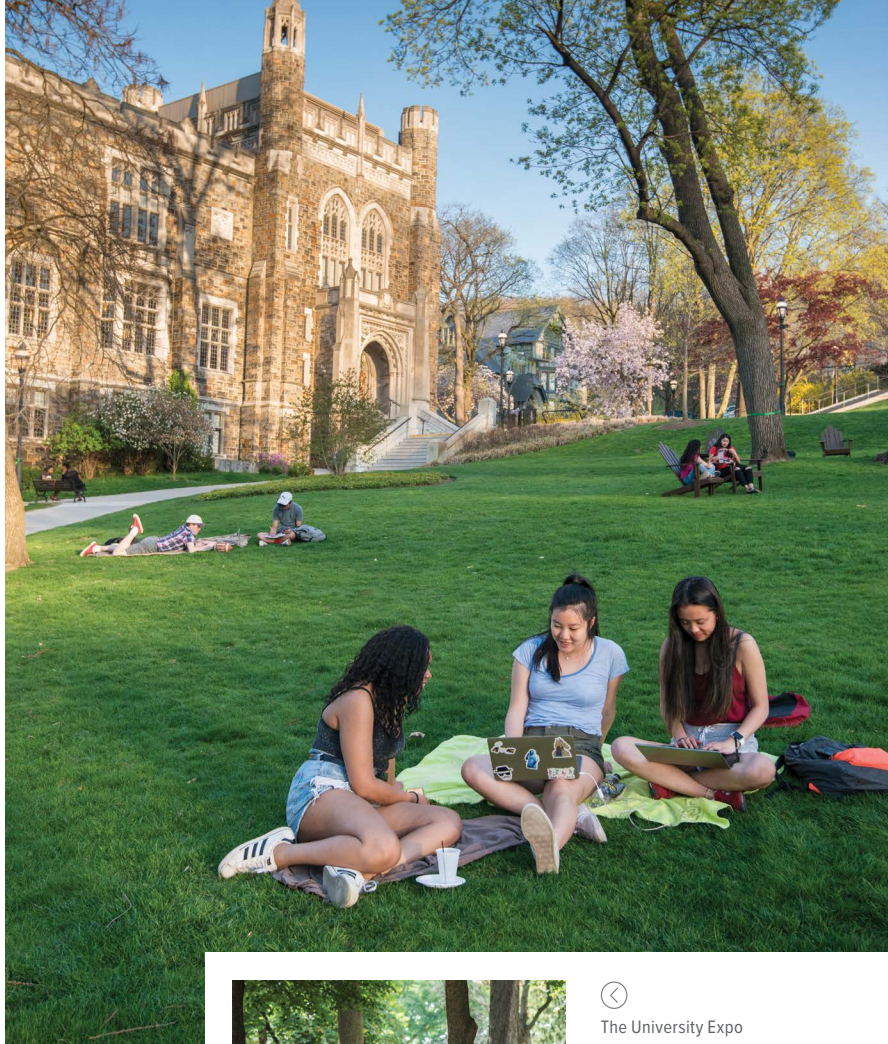
From the moment you arrive on campus, you'll be welcomed into a campus community that encourages you to do what you love and try some new things, too. Whatever your interests, Lehigh's student clubs and organizations provide countless opportunities to get involved, and a range of resources offer support and guidance throughout your college experience.

## Clubs & Organizations

With more than 200 clubs and organizations, you're bound to find what you're looking for. Options range from professional and academic organizations to intramural and club sports to performing arts and political clubs—and if you can't find your niche, you'll have the resources to create your own.

## Resources & Support

Lehigh offers resources to help you succeed and plenty of friendly faces ready to lend a hand. Beginning with orientation, the Office of First-Year Experience provides guidance for your academic and social transition, and the Dean of Students Office is committed to supporting your intellectual and personal development throughout your college career. You'll also find nationally recognized welcoming spaces across campus—the Center for Gender Equity, the Chaplain's Office, the Office of Multicultural Affairs, the Pride Center and the Office of Student Access and Success—that facilitate connections and community building.



Pride-A-Palooza, a celebration of everything that is Pride, takes place on the STEPS lawn and features games, food, performances and more.



The University Expo takes place each fall and spring, connecting students with more than 500 clubs, organizations and community vendors.



Lehigh's 40 club and intramural sports include dodgeball, baseball, fencing, cycling, frisbee and more.



Presented by OISS and the Global Union, the annual International Flag Parade represents countries from across the Lehigh community.



# Spirit Week

The week leading up to the Lehigh-Lafayette football game is considered a favorite amongst the entire campus community. Students take place in new and 150+-year old traditions, and campus is full of school spirit.



## Bed Races

Students form teams, decorate beds and drag race them down the length of Memorial Walk in one of Lehigh's most treasured and unique traditions.



## Eco-flame

The Marching 97, Lehigh's marching band, marches in and out of classrooms and other campus buildings playing Lehigh fight songs on the Friday of Spirit Week.



## The Rivalry Game

The Lehigh-Lafayette game (or the Rivalry, as it's known) is the most-played rivalry in college football—the schools have faced one another since 1884.

## FAVORITE STUDY SPOT

*Linderman Library*  
Whether it be in the stacks of the rotunda or the long tables on the first floor, I have always loved the academic aura of Lindy since my freshman year.



## STUDENT PROFILE

# Soccer and Science

**Euan Forrest '23**

**COLLEGE:**  
Arts and Sciences

**MAJORS:**  
Behavioral Neuroscience and Economics

**HOMETOWN:**  
Douglassville, Pennsylvania

**ACTIVITIES**  
NCAA Division 1 student-athlete on the Lehigh Men's Soccer team, undergraduate research in neuroscience

“

Being a student-athlete at Lehigh has been one of the most challenging yet rewarding experiences of my life. It has taught me how to balance school, athletics and extra-curriculars while maintaining strong relationships with my teammates and classmates. I have made some of my closest friends as a student-athlete who have always supported me in every aspect of life.

”





## You Know You're a Lehigh Student When...

# 1

you've been planning  
your team's bed race  
costumes for months.

# 2

you're on a first-  
name basis with The  
Crepe Lady.

# 3

you've lost track of  
time studying under  
Linderman's rotunda.

# 4

you have calves of  
steel from the 2,600  
stairs on campus.

# 5

your favorite  
sandwich is from The  
Goose's secret menu.

# 6

you think "Le-Laf"  
is the best week  
of the year.

## Campus Events

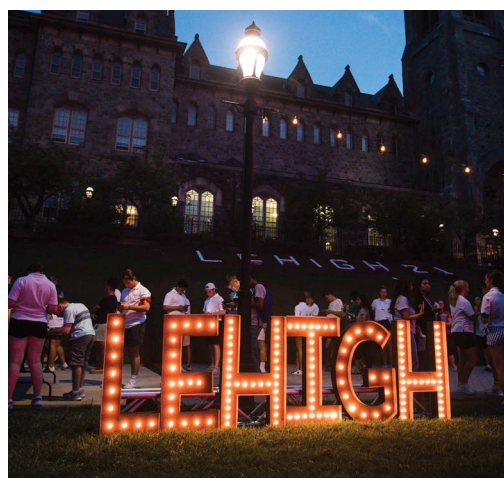
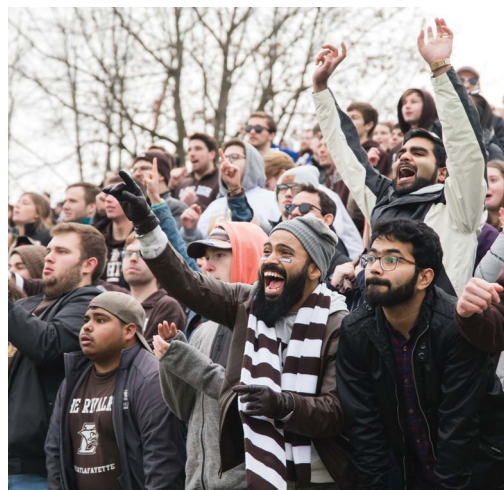
Arts, entertainment, Division-I sports,  
world-renowned speakers: You'll find it  
all on Lehigh's campus.

### Arts

Zoellner Arts Center, a hub of creative  
expression for the university and the local  
community, features three theaters and is  
home to outstanding student productions  
open to any major. Zoellner Arts Center  
also hosts world-class speakers such as  
Pete Souza and David Sedaris, and houses  
Lehigh University Art Galleries, a teaching  
museum that maintains and develops the  
university's world-class collection of more  
than 14,000 objects.

### Athletics

Lehigh competes at the Division I level  
with a total of 25 sports for men and  
women, including football, wrestling,  
basketball, softball and swimming. This  
provides for a vibrant fan experience for  
all students as well as a first-class athletics  
program for student athletes.



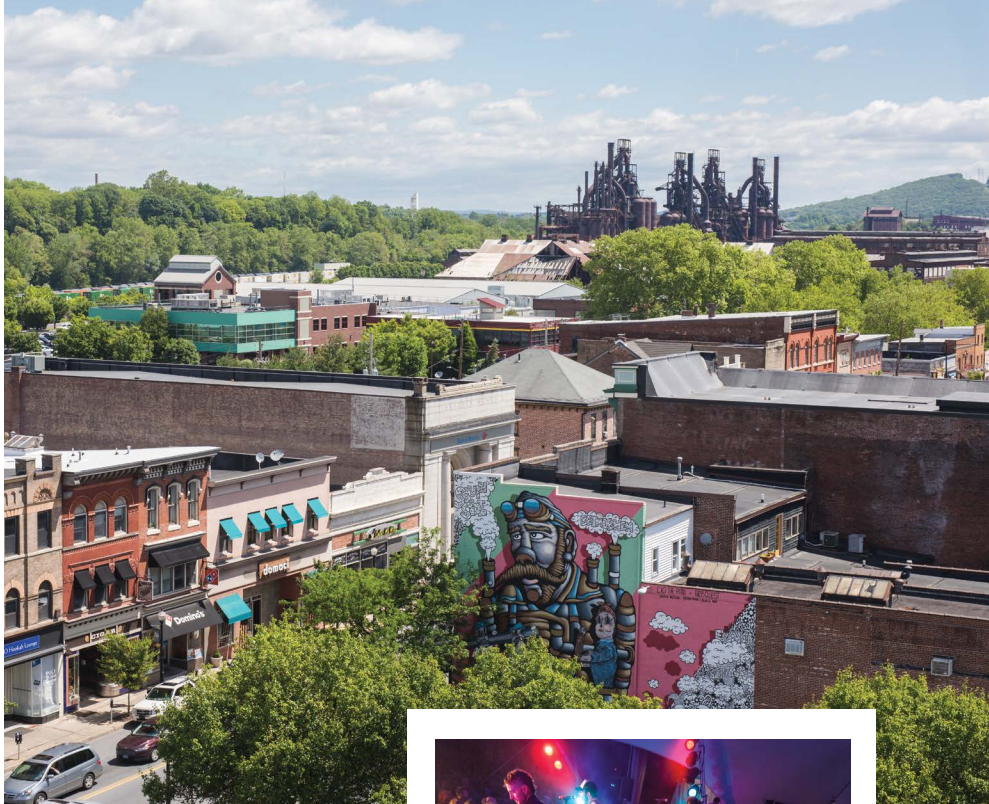
➤ Campus-wide events—like The  
First-Year Rally, Lehigh After Dark's  
Carnival and campus-wide concerts  
on the UC Front Lawn—bring  
students together from across class  
years and interest groups.



# Our College Town

Lehigh is located in Bethlehem, Pennsylvania, within the Lehigh Valley, which is the third-largest metropolitan area in Pennsylvania. Lehigh's home in the SouthSide Arts District offers an eclectic blend of shops, services, restaurants and cafes. Take a walk on the South Bethlehem Greenway, enjoy a delicious lunch or from-scratch dessert, or visit the local movie houses or music venues.

Lehigh is a short drive or bus ride from Philadelphia and New York City, offering students ample opportunities for internships, networking events and fun excursions. More fun and adventure can be found within 30 minutes of campus—explore the great outdoors by hiking the Appalachian Trail and camping and skiing in the Pocono Mountains.



## SteelStacks

Located on property that was once the historic Bethlehem Steel plant, SteelStacks' 10-acre campus serves as a community gathering place that each year offers hundreds of concerts, films, festivals and community celebrations.



## Bethlehem Farmers' Market

Each Thursday from April through October, Lehigh's Farrington Square hosts the Bethlehem Farmers' Market. Students and the campus community have access to a wide variety of fresh produce, local baked goods and specialties, and rotating food trucks.



Lehigh students can find more than 15 types of cuisine just in walking distance from campus! Favorites include The Goose, Jenny's Kuali and Tulum.



Local attractions include the Promenade Shops, the Lehigh Valley IronPigs (the Philadelphia Phillies' AAA affiliate), the Lehigh Valley Phantoms (the Philadelphia Flyers' AHL affiliate), Martin Guitar, the Crayola Factory and more.





## STUDENT PROFILE

# Growth Outside of Class

**Salma Elboute '22**

### COLLEGE:

College of Business

### MAJORS:

Management with concentration in Entrepreneurship

### MINORS:

Africana Studies and Real Estate

### HOMETOWN:

Brooklyn, New York

### ACTIVITIES:

Circle of Sisters, Diversity Peer Educators (DPE), MESU, Admissions Ambassadors, Women in Business, STEP Team

### FAVORITE THING ABOUT LEHIGH

The people that I have met. I have friends from all over the world and other majors, which is really important to me because I subconsciously and continuously sometimes learn from the experiences of the people around me.

“

I feel like if your life is only centered around your academics and things you do in class, you are not truly getting anything out of college or life. I feel like my extracurriculars allow me to explore what I care about and critically think about how I can apply my major or the things I learn in class to real jobs, etc.

”





# Success After Graduation

We are built to take  
on challenging and  
rewarding roles, and  
to make an impact  
wherever we go.

**95%**

of the class of 2020 were  
employed or attending  
graduate school within six  
months of graduation

**\$67K**

average starting salary  
for the class of 2020

**96%**

of the class of 2020  
completed one or  
more internships or an  
experiential learning  
opportunity

**85K+**

graduates in the  
Lehigh alumni network



# Plan Your Future

Our Center for Career & Professional Development (CCPD) helps pave the path to success through career education and key connections. Students can connect with employer partners and alumni through externships, internships, on-campus interviews, career expos and more. Our career coaching team is aligned with Lehigh's colleges to deliver customized career education and connections.

The CCPD uses a four-year career learning cycle that will help you take charge of your career development and plan your future.

[lehigh.edu/careerservices](https://lehigh.edu/careerservices)



## Explore

Ask big questions, explore and participate in activities that will help you develop an understanding of how your strengths, skills, interests and values relate to your choice of a major and career.



## Develop Skills

Build effective skills and your personal brand, and develop the tools and strategies needed to secure an internship or full-time position.



## Gain Experience

Try things through capstone projects, research, study abroad and leadership opportunities, as well as internships, externships or a co-op position.



## Build Connections & Network

Build connections and network with alumni and other professionals, seek information and advice about career paths, and work with the CCPD team to develop a strategy.



# Real-Life Experience

Internships, co-ops and experiential learning are an integral part of a Lehigh education and an important step in the career decision-making process. Students have many opportunities to gain real-world experience through the Center for Career & Professional Development, the colleges and Lehigh alumni, as well as formal programs such as the fully funded Iacocca International Internship Program. With 96% of the class of 2020 completing one or more internships or an experiential learning opportunity, our students have taken on real-world challenges in a wide variety of industries and roles at companies including:

- Amazon Lab 126
- Barclays
- B. Braun
- Children's Hospital of Philadelphia
- Crayola
- Curtiss-Wright
- Cushman and Wakefield
- Deloitte
- EY
- Forbes
- GE Transportation, a Wabtec Company
- IBM
- Knoll
- KPMG
- Mailchimp
- NASA Jet Propulsion Lab
- Pfizer
- PwC
- Sanofi Pasteur
- Vanguard Energy Partners
- Wacker



Students can network, search for jobs and connect with career coaches on Handshake, Lehigh's career management platform. There are over 200,000 employers connected to Handshake, including 98% of Fortune 500 companies.

## An Invaluable Investment

### #21

in Payscale's Best Universities for a Bachelor's Degree

### #29

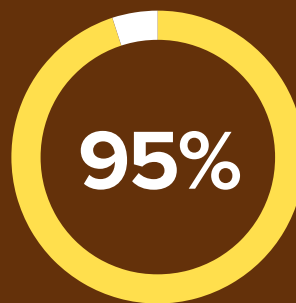
on *The Washington Post's* "Return on Investment Over 30 Years" list

### #29

in *U.S. News's* Best Value Schools (National Universities)



# Where Did the Class of 2020 Land?



were employed or attending  
graduate school within six  
months of graduation

[lehigh.edu/postgraduatesuccess](https://lehigh.edu/postgraduatesuccess)

## TOP INDUSTRIES

Accounting	Management Consulting
Computer Software	Marketing and Advertising
Construction	Media
Defense & Space	Research
Financial Services	Technology
Healthcare	

## GRADUATE SCHOOLS *(partial listing)*

Columbia University	Tufts University School of Medicine
Cornell University	The University of Chicago
Georgetown University Law Center	The University of Pennsylvania School of Dental Medicine
Johns Hopkins University	Yale Law School
Stanford University	

## TOP EMPLOYERS







#### FAVORITE STUDY SPOT

My favorite study spot on campus is Lehigh University Bookstore. It has a nice study atmosphere, friendly staff, and good coffee.



#### STUDENT PROFILE

# The Prepared Graduate

## Alibek Kaliyev

#### MAJOR:

Computer Science and Business

#### MINORS:

Data Science, Cognitive Science

#### HOMETOWN:

Almaty, Kazakhstan

#### ACTIVITIES:

Undergraduate Research, Computer Science and Business Association (Technical Development Chair), Student Grader & Lab Assistant for CSE007 class, Lehigh Taekwondo Club member



Based on my experience as a Computer Science and Business (CSB) student, Lehigh is preparing its students to become experts in multiple spheres rather than one... all students of Lehigh can easily get involved in undergraduate research through the Mountaintop program, or develop themselves as entrepreneurs through Lehigh Baker Institute, which runs many interesting programs throughout a year. One of them is Global Entrepreneurial Fellowship, where students have the opportunity to learn about the entrepreneurial process and contribute real impact by working with startups and entrepreneurial leaders in a global setting.



#### ALUMNI

### An Auto Clinic Where Girls Rule

Patrice Banks '02 is founder and CEO of Girls Auto Clinic, a full-service auto repair center and beauty salon in Upper Darby, Pennsylvania, that caters to women. Her story has been featured in *O, The Oprah Magazine*; *Time*; *Huffington Post* and *The New York Times*, among others. She has appeared on *CBS This Morning*, NPR's *Fresh Air* with Terry Gross and in commercials for Ford, Dell and Lean Cuisine.



#### ALUMNI

### Sustainable Cities

Jennifer S. Gonzalez '08 '09G is a leader in municipal sustainability. As director of environmental services and chief sustainability officer for the City of Hoboken, New Jersey, she advances sustainability and resiliency initiatives in priority areas including rainfall flooding, energy, drinking water infrastructure, natural resources, and waste management.



# Resources

## Apply to Lehigh

**If you're ready to join an intellectual community where your passion for discovery meets endless possibilities, it's time to apply to Lehigh.**

### How to Apply

Lehigh University uses the Coalition Application and the Common Application. For all admissions requirements, please visit our website.

### What We Look For

We seek students who are eager to learn, consistently work hard, and desire to make a positive impact in their communities and world. As a result, some factors we consider when reviewing include the student's character, curriculum, grades, personal background and how they spend their time outside of the classroom.

For required documents and deadlines for admission, visit our website.

[lehigh.edu/admissions](https://lehigh.edu/admissions)

Our admissions team takes careful consideration when reviewing applications. Your transcript will give us a sense of your work ethic and interest in learning—key traits of students who thrive at Lehigh. We also look for students who will make a positive impact and contribution to our community, reviewing teacher and school counselor recommendations for indicators of your character, motivation, leadership and dedication. Demonstrating your interest can also be an important aspect. Visit us on campus, connect with your regional admissions counselor (listed on our website) and engage with us on social media. If you want to attend Lehigh, make sure we know about it.

### Types of Applications

- Early Decision I
- Regular Decision
- Early Decision II
- Transfer

#### EARLY DECISION I AND II

Lehigh has two rounds of binding Early Decision where applicants commit to attend Lehigh if admitted. Students selected in Early Decision I or II are required to withdraw all other applications filed at other institutions and must not initiate any new applications to other schools. All Early Decision candidates are fully evaluated for standard need-based financial aid and merit scholarships, and tentative financial aid awards for those who qualify are sent at the time of admission.

#### REGULAR DECISION

Lehigh receives the majority of applications through traditional Regular Decision. Applicants are notified of admission decisions by April 1 and receive financial aid information at the time of admission.

#### TRANSFER

Lehigh University welcomes applications from transfer students who are currently enrolled at other two- or four-year colleges or universities. Lehigh provides a credit evaluation only after extending an offer of admission. Registration & Academic Services, in consultation with the faculty of Lehigh University, will make the final determination on which college credits will transfer to the institution.

## Admissions and Financial Aid Dates and Deadlines

### EARLY DECISION I

**November 1**  
application and  
financial aid deadlines

**Mid-December**  
admission and financial  
aid notifications sent

### EARLY DECISION II

**January 1**  
application and  
financial aid deadlines

**Mid-February**  
admission and financial  
aid notifications sent

### REGULAR DECISION

**January 1**  
application deadline

**February 1**  
financial aid deadline

**Late March**  
admission and financial  
aid notifications sent

### FALL TRANSFER

**February 15**  
application deadline

**March 1**  
financial aid deadline

**Mid-May**  
admission and financial  
aid notifications sent

### SPRING TRANSFER

**November 1**  
application and financial  
aid deadlines

**Mid-December**  
admission and financial  
aid notifications sent

For required documents  
and deadlines for admission,  
visit our website.

[lehigh.edu/apply](https://lehigh.edu/apply)

## Application Tips

1

Start early to give yourself ample time to get through the college selection and application process.

2

Consider all that you want us to know about you and then make sure that everything is reflected somewhere in your application.

3

Authenticity is the key to submitting an application that stands out. Focus less on fitting in a box and more on sharing who you are.

4

Check your application for accuracy and completeness, and ensure that all required items have been submitted.

5

Be aware of deadlines, and consider submitting your application days or even weeks before the due date.



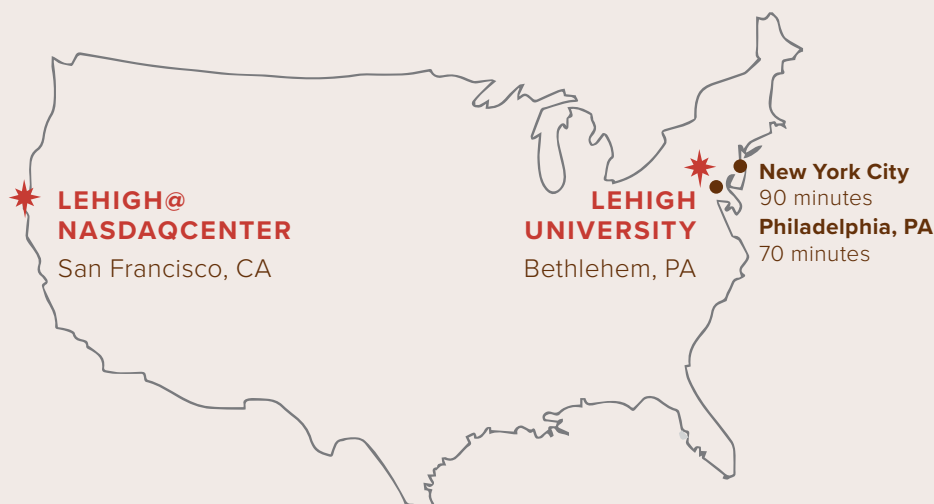
# Visit Campus

## Experience our quintessential college campus in person or virtually.

In a world with COVID-19, we know not everyone is able to visit campus. A visit, whether in-person or virtual, is an important element of your college search. We offer many opportunities to learn more about Lehigh both virtually and in person (when possible). From information sessions with admissions counselors and student-guided campus tours to college-specific sessions and student panels, you'll have the chance to explore why Lehigh could be right for you.

View current virtual and/or on-campus visit opportunities:

[lehigh.edu/visitinglehigh](https://lehigh.edu/visitinglehigh)



## Financial Aid

Lehigh provides substantial financial assistance—more than \$100M last year—to support admitted and current students. Priority for our abundant financial aid budget is given to students who complete an aid application by our stated deadlines.

We believe that, regardless of your family's financial situation, a strong partnership between you and the university, as well as a commitment from you and your parents, makes a Lehigh University education an attainable goal.

The process of applying for financial aid may be confusing or stressful. Our Financial Aid Office is here to help you through the application process and beyond. We recommend that all students apply for financial aid—it is the best way to see how a Lehigh education can be more affordable than you think. Be aware that applying for admission to Lehigh and applying for financial aid require separate documents and may have different deadlines.

[lehigh.edu/financialaid](https://lehigh.edu/financialaid)



### Net Price Calculator

To help estimate your possible financial aid award before you apply, we recommend you use the Net Price Calculator available on our website.

### APPLYING FOR FINANCIAL ASSISTANCE

Students who would like to be considered for need-based aid must submit the following documents by the deadlines for full consideration\*\*:

- Free Application for Federal Student Aid (FAFSA) (U.S. citizens and permanent residents only)
- College Board's CSS/Financial Aid Profile
- Federal Tax Returns (U.S. citizens and permanent residents only)

**\*\*Please note that this is not an exhaustive list. Applicants should check their portal to view additional and/or outstanding requirements and to confirm receipt of application materials.**

### FINANCIAL AID PACKAGES

Typical financial aid packages consist of a combination of grants, scholarships, loans and student employment and are determined after evaluating a family's ability to contribute in an equitable and consistent manner.

Grants and scholarships do not need to be repaid or earned by working. Most grants are considered need-based awards and are awarded based on a student's calculated need as determined by the university's financial aid staff. Scholarships typically are merit-based and determined by the Office of Admissions during their review and selection process. Loans are funds that are borrowed and must be repaid over time, usually with interest. We recognize that while loans can be intimidating, minimal borrowing can be a useful tool to pay for your education that will experience a strong return on investment. Through the Lehigh federal work-study awards, students can earn money to help meet expenses that are not billed by the institution, such as books and personal expenses.

### 2021 – 2022 Tuition & Costs

**\$56,980**  
Tuition

**\$15,330**  
Typical first-year housing and full meal plan

### Financial Aid Stats

**\$100M**

available in grants and scholarships

**>50%**

of current Lehigh students receive some form of financial aid

**\$41,716**

the average financial aid award of first-year students that got need-based aid

**20%**

of students admitted to the Class of 2025 received a merit scholarship



# Majors & Programs

## College of Arts and Sciences

### ARTS

Architecture  
Art  
Art History  
Design  
Music  
Music Composition  
Theatre

### HUMANITIES

Africana Studies  
Asian Studies  
Chinese  
Classics  
English  
French & Francophone Studies  
German  
Japanese Studies  
Latin American & Latino Studies  
Philosophy  
Religion Studies  
Spanish & Hispanic Studies

### INTERDISCIPLINARY STUDIES

Cognitive Science  
Environmental Studies  
Global Studies  
Interdisciplinary Studies  
Joint International Relations/  
Modern Languages &  
Literatures  
Women, Gender & Sexuality Studies

## MATH AND NATURAL SCIENCES

Astronomy  
Astrophysics  
Behavioral Neuroscience  
Biochemistry  
Biology  
Chemistry (B.S. and B.A.)  
Cognitive Science  
Computer Science (B.S. and B.A.)

Earth & Environmental Sciences  
Mathematics  
Molecular Biology  
Pharmaceutical Chemistry  
Physics  
Statistics

## SOCIAL SCIENCES

Anthropology  
Economics  
Health, Medicine & Society  
History  
International Relations  
Joint International Relations/  
Economics  
Journalism  
Journalism/Science Writing  
Political Science  
Psychology  
Science, Technology &  
Society  
Sociology  
Sociology & Anthropology

## College of Business

Accounting  
Business Information Systems  
Economics  
Finance  
Management  
Marketing  
Supply Chain Management

## College of Health

Community and Global Health  
Population Health

## P.C. Rossin College of Engineering and Applied Science

Applied Science  
Biocomputational Engineering  
Bioengineering  
Chemical Engineering  
Civil Engineering  
Computer Engineering  
Computer Science (B.S.)  
Electrical Engineering  
Engineering Mechanics  
Engineering Physics  
Environmental Engineering  
Industrial & Systems Engineering  
Materials Science & Engineering  
Mechanical Engineering

## Dual-Degree/ Accelerated Programs

Arts & Engineering<sup>1</sup>  
Bachelor's Degree in desired subject of certification and Master of Education (M.Ed.)<sup>1</sup>  
Master of Public Health<sup>1</sup>  
Master of Population Health<sup>1</sup>  
Pre-Dental Science with Penn Dental School  
Pre-Optometry Science with SUNY College of Optometry

## Intercollegiate Interdisciplinary Programs

Computer Science and Business Program (CSB)  
Integrated Business and Engineering Honors Program (IBE)  
Integrated Degree in Engineering, Arts and Sciences (IDEAS)

## Pre-Professional Tracks

Pre-Allied Health  
Pre-Dental  
Pre-Law  
Pre-Medical  
Pre-Veterinary

<sup>1</sup> 5-year dual-degree program

## Virtual Tour

Experience our virtual tour and follow the route of the undergraduate admissions tour to see academic and student life buildings.

[lehigh.edu/virtualtour](http://lehigh.edu/virtualtour)





# Minors & Certificates

Actuarial Science	Environmental Studies	Philosophy
Aerospace Engineering	French	Physics
Africana Studies	German	Political Science
American Studies	Global Population Health Certificate	Polymer Science & Engineering
Anthropology	Global Studies	Population Health Certificate
Applied Mathematics	Graphic Design	Probability & Statistics
Asian Studies	Health, Medicine, Society	Product Design
Astronomy	History	Psychology
Biology	History of Architecture	Public Administration
Biotechnology	History of the Visual Arts	Public Policy Economics
Business	Integrated Real Estate at Lehigh Program	Pure Mathematics
Business Information Systems	International Economics	Religion Studies
Chemical Engineering	International Relations	Russian
Chemistry (ACS Certified)	Japanese	Science & Environmental Writing
Chinese	Jewish Studies	Science, Technology & Society
Classical Civilization	Joint International Relations/Modern Languages & Literatures	Sociology
Classics	Latin	Sociology & Anthropology
Clinical Psychology	Latin American & Latino Studies	Spanish & Hispanic Studies
Cognitive Science	Manufacturing Systems Engineering	Studio Art
Computer Science (College of Arts and Sciences)	Mass Communication	Supply Chain Management
Computer Science (P.C. Rossin College of Engineering and Applied Science)	Materials Science & Engineering	Sustainable Development
Data Science	Mathematics	Theatre
Earth & Environmental Sciences	Mechanics of Materials	Women, Gender & Sexuality Studies
Electrical Engineering	Military Science	
Energy Engineering	Molecular Biology	
Engineering	Museum Studies	
Engineering Leadership	Music	
English	Music Industry	
Environmental Engineering	Nanotechnology	

## Fast Facts

### CLASS OF 2025

**14,107** **1,519**  
total total enrolled  
applicants students

**1380 – 1500**  
SAT middle 50% range  
of admitted students\*

**32 – 34**  
ACT middle 50% range  
of admitted students\*

**47%**  
of the class applied ED

### UNDERGRADUATE STUDENT BODY

**5,451**  
total enrollment

**79**  
countries represented

**49 + D.C. and Puerto Rico**  
states represented

**8%**  
international

**28%**  
underrepresented







**46% 54%**

For more statistics,  
please visit

[lehigh.edu/about/  
university-statistics](https://lehigh.edu/about/university-statistics)

## Social Media

Connect with us on social media to get an inside look at life at Lehigh through student takeovers, info on academics and student life, and the latest news.

	<a href="https://www.instagram.com/lehighu">instagram.com/lehighu</a>
	<a href="https://www.tiktok.com/@lehighadmissions">tiktok.com/@lehighadmissions</a>
	<a href="https://twitter.com/lehighadmission">twitter.com/lehighadmission</a>
	<a href="https://facebook.com/lehighadmissions">facebook.com/lehighadmissions</a>
	<a href="https://youtube.com/lehighu">youtube.com/lehighu</a>
	<a href="https://snapchat/lehighu">snapchat/lehighu</a>

## Principles of an Equitable Community

Lehigh is committed to being an institution that strives to enhance diversity, inclusion and equity. Every member of our community has a personal responsibility to acknowledge and practice the following basic principles:

[go.lehigh.edu/principlesofequitablecommunity](https://go.lehigh.edu/principlesofequitablecommunity)

Learn more at:

[lehigh.edu/diversity](https://lehigh.edu/diversity)

\*This includes official and nonofficial submitted scores. Submitting SAT or ACT results is optional for students applying to enter in 2021, 2022 and 2023.





**Office of Admissions**

27 Memorial Drive West  
Bethlehem, PA 18015-3094

[lehigh.edu/admissions](http://lehigh.edu/admissions)

NON-PROFIT  
U.S. POSTAGE  
PAID  
LEHIGH VALLEY, PA  
PERMIT NO. 504

